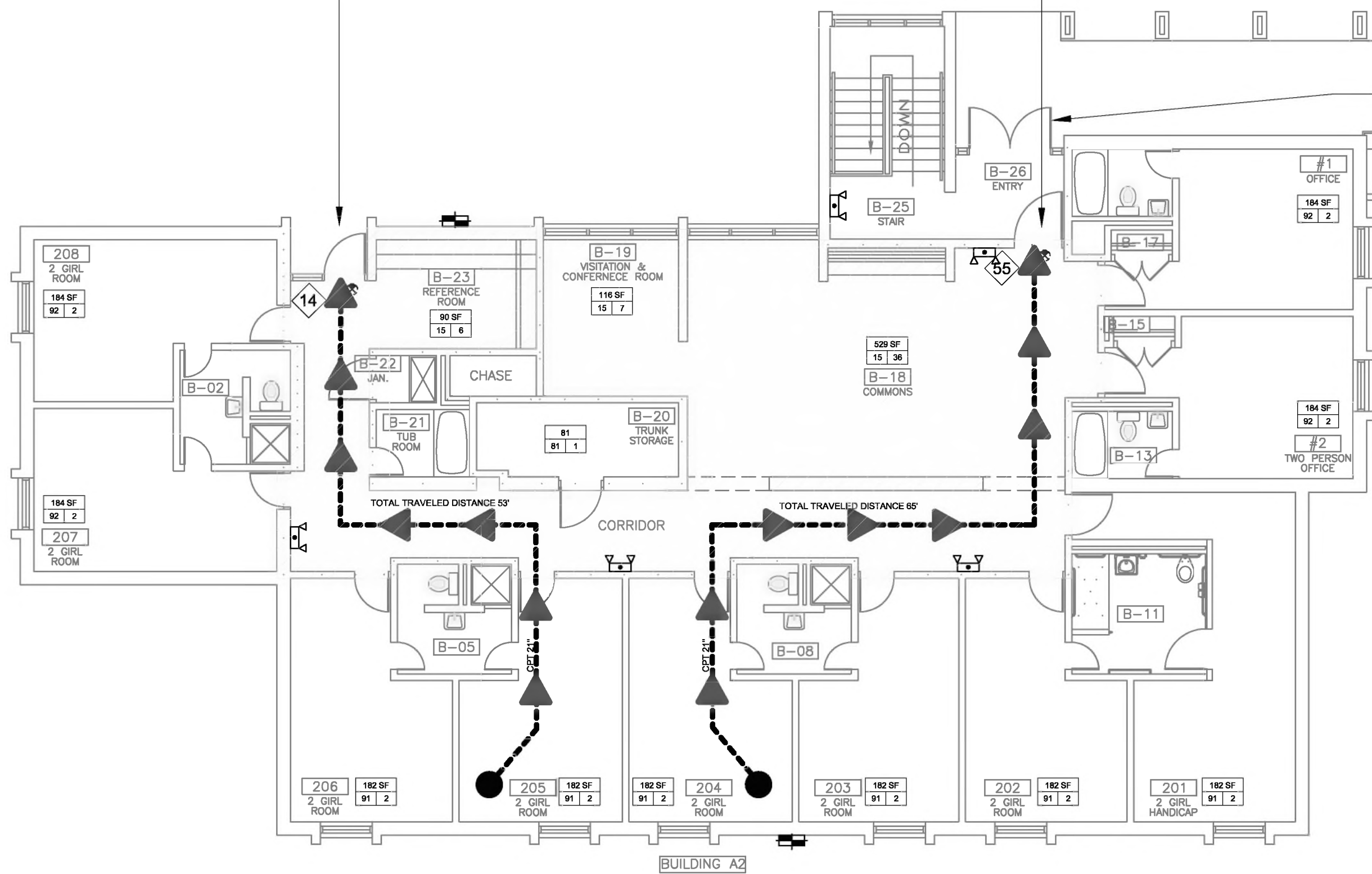


LIFE SAFETY LEGEND	
	EXIT SIGNS
	TOTAL DISTANCE TRAVELED
	COMMON PATH OF TRAVEL
	TRAVEL DISTANCE MAXIMUM ALLOWABLE TRAVEL DISTANCE 300'
	NUMBER OF OCCUPANTS
	NUMBER OF OCCUPANTS AT EXIT
	EXISTING 1 HR RATED FIRE BARRIER WALLS AS INDICATED IN AS-BUILT DRAWINGS PROVIDED
	1 HR RATED FIRE BARRIER WALLS/CEILING SYSTEM
	EMERGENCY EXIT LIGHT
	WALL MOUNTED EMERGENCY LIGHT

120 SF - - - ROOM AREA
92 | 2 - - - OCCUPANT LOAD
15 | 6 - - - AREA PER OCCUPANT

DOOR WIDTH PROVIDED: 34"
DOOR WIDTH REQUIRED: 32"
MAXIMUM OCCUPANT LOAD: 170 PERSONS
ACTUAL OCCUPANT LOAD: 15



1 BUILDING A2 - LIFE SAFETY PLAN
SCALE: 1/8" = 1'=0"

DOOR WIDTH PROVIDED: 34"
DOOR WIDTH REQUIRED: 32"
MAXIMUM OCCUPANT LOAD: 170 PERSONS
ACTUAL OCCUPANT LOAD: 19

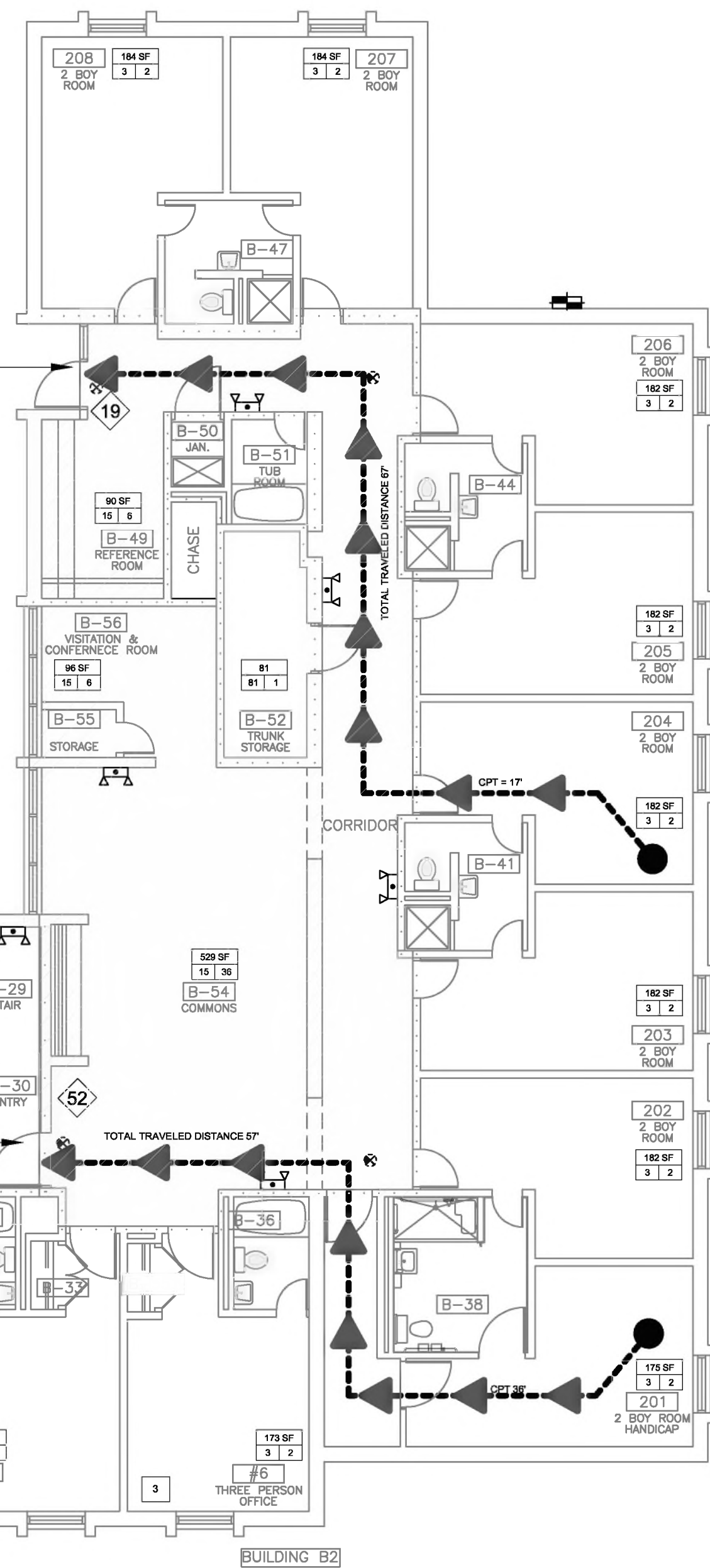
DOOR WIDTH PROVIDED: 40"
DOOR WIDTH REQUIRED: 32"
MAXIMUM OCCUPANT LOAD: 200 PERSONS
ACTUAL OCCUPANT LOAD: 55

DOOR WIDTH - 72"

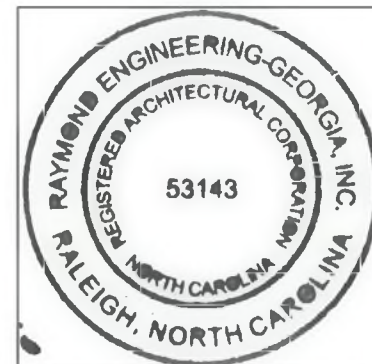
DOOR WIDTH PROVIDED: 40"
DOOR WIDTH REQUIRED: 32"
MAXIMUM OCCUPANT LOAD: 200 PERSONS
ACTUAL OCCUPANT LOAD: 52

DOOR WIDTH - 72"

2 BUILDING B2 - LIFE SAFETY PLAN
SCALE: 1/8" = 1'=0"



1/8" = 1'=0" 0' 4' 8' 16' 32'



REVISIONS

RAYMOND
ENGINEERS, PA
316 WEST MILLERBROOK ROAD, SUITE 201
RALEIGH, NORTH CAROLINA
OFFICE: (919) 872-7866
WWW.RAYMONDGLOBAL.COM
LICENSE #53143 CO#4 C482

ATLANTEC
ENGINEERS, PA
3221 BLUE RIDGE ROAD, SUITE 113
RALEIGH, NC 27612
(919) 571-1111
1505 ST. JAMES PLACE
KINSTON, NC 28504
(252) 327-3336

PREPARED FOR:
NC DEPARTMENT
OF INSTRUCTION
SCO #
24-27792-01A

GOVERNOR MOREHEAD SCHOOL
SPRINKLER, ADA TOILET, LIGHTING
UPGRADES FOR DORMS A, B, & D
RALEIGH, NC

CONTENTS:
LIFE SAFETY
PLAN
BUILDINGS A&B
SECOND FLOOR

DATE:
05/27/2025
FOR
CONSTRUCTION
DESIGNER:
ENGINEER:

SHEET NO.

G-401

OF